

TDM supports NX users successfully with CAM and CAD-interface modules for the online transfer of tool data and graphics.

The basis: CAM-interface

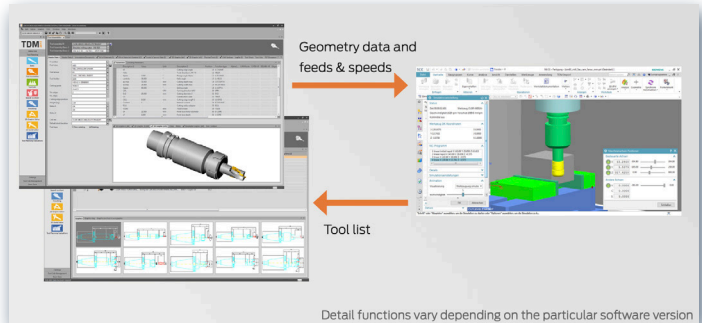
The interface TDM-NX supports your continuous CAM process via access to the tool data in your central tool database. The software provides company-specific tool know-how in the phases of the CAM-planning process.

Functions of the CAM-interface TDM-NX

- Supports NC programmers by providing direct access to the TDM database
- Easy and quick selection of milling, drilling and turning tools from TDM via search Tool Panel or via Tool Search in TDM
- Provides access to geometry data, collision data and machining know-how (cutting data)
- Re-transfer of the tools used in NX to TDM in form of tool lists

Advantages of the CAM-interface TDM-NX

- Time savings through fast tool selection
- Efficient data maintenance in the central tool database with direct access to TDM tool data from the CAM environment
- Non-redundant tool data
- Reduced effort required to create the NC program because users can move within their familiar NX environment when creating the NC programs
- Central access to cutting data and, thus, reduced error count in NC programming
- Selection of feeds & speeds based on cutting tool material, workpiece material and machining type



tdmsystems

The extension: CAD-features

TDM 3D-Solid Converter for NX provides NX users with convenient function for creation of NX-conform STEP data. Based on the TDM 3D tool assembly graphics, the integrated software tools for automatic conversion and for manual editing of 3D tool graphics offer substantial time savings and quality improvements in daily work.

TDM 3D-Solid Converter for NX

The TDM 3D-Solid Converter makes it possible to derive tool geometries according to NX requirements from TDM 3D tool graphics. The STEP data are then available for usage via the program function integrated in NX in order to generate native NX prt files with Machine-Tool-Builder (prerequisite) information. This provides NX users with effective collision control as a result of highly realistic NC program simulations in the virtual machine room.

TDM 2D-Graphic Editor and TDM 3D-Solid Editor

The functions of the TDM 2D-Graphic Editor and the TDM 3D-Solid Editor make it easy to adapt and correct 2D graphics and 3D solids directly in TDM. Correction of layers, drawings, dimensions, axis alignments and zero points enables fast and targeted processing of existing drawings and models. As a result, these conform to the TDM standard for later use by the TDM 3D-Solid Converter and in NX.

Advantages of the CAD-features:

- Easy creation of the TDM 3D data and conversion into the NX-specific format
- Efficient data maintenance, any previously stored 3D data in TDM can be made available for all CAM and simulation systems at the click of a button
- Collision-free NC programs as a result of highly realistic machine simulations

