



How to Install an

Emergency NX License Server

 **Swoosh** Technologies & Solutions Official How-To Guide

Solution
Partner

Digital Industries
Software

SIEMENS

Who likes interruption these days?

Especially when it's
software related.

So, you're being asked to work from home, a different environment, or something went down. And now, you're scrambling to make sure you're able to get into all the software (NX, in this case) and other systems that allow you to work efficiently.

We feel your frustration, and we're here to help lessen that stress.

An emergency NX Licensor Server can help you get up and running. Keep in mind, though, that the license is temporary and is good for up to 7 days. Thus why we call it the emergency NX License Server file.

Our guide will walk you through the steps of installing the temporary license server. If you haven't requested one yet, please do so by contacting us by phone (314) 549-8110, Option 2, by email (support@swooshtech.com), or by [submitting a support ticket online](#)

Prerequisites

To get started you will need to obtain the following:

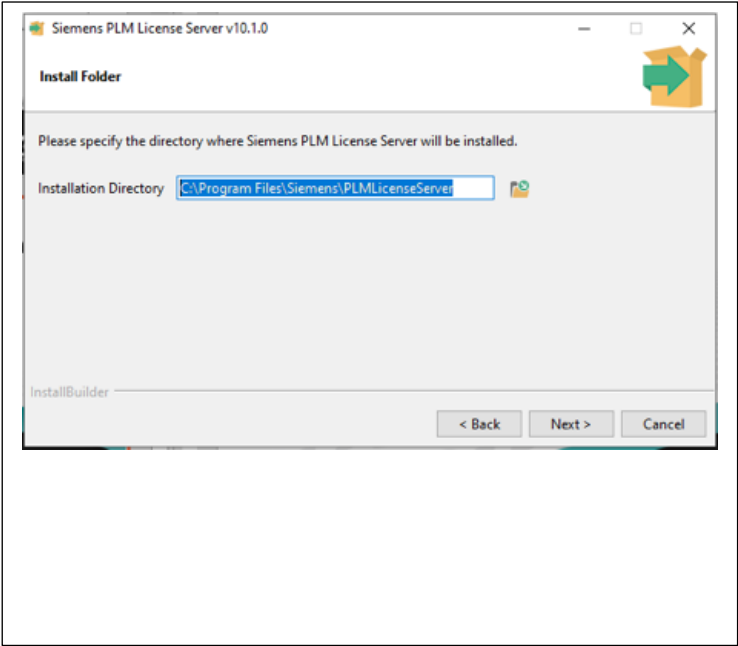
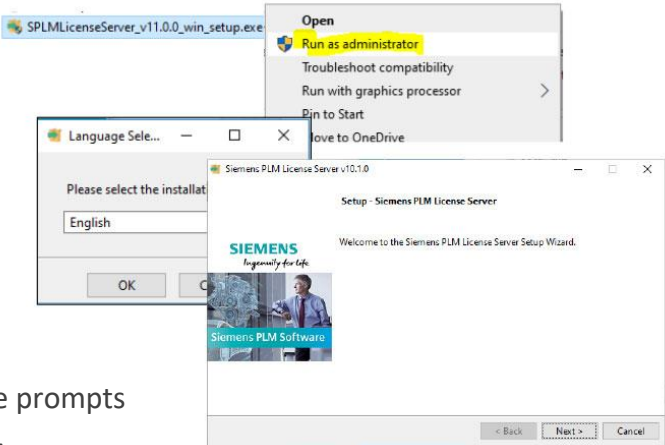
- NX license server installation media for your version of NX, or higher
 - For NX1899, the installer is named
SPLMLicenseServer_v10.1.0_win_setup.exe
- NX “emergency” license file from Siemens Digital Industries (formerly Siemens PLM).
 - Emergency licenses are not tied to any host ID and have the following line:
SERVER YourHostname ANY 28000

Make sure to save the file with your correct computer name in the **SERVER** line.

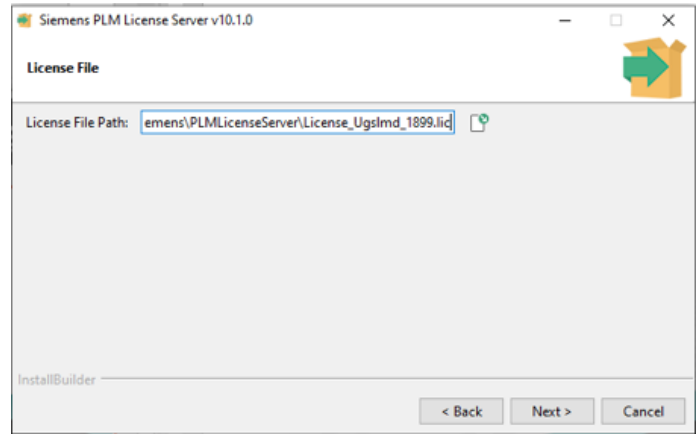
Run the SPLM License Setup Program

You will need administrator privileges to install the NX license.

1. Right-click on **SPLMLicenseServer_v10.1.0_win_setup.exe** and choose **Run** as an administrator.
2. Choose a language for the installer and click OK.
3. Click **Next** in the **Setup Wizard** and follow the prompts to install the server in a folder of your choice.
4. Choose a folder to install the license manager. The default location is under **Program Files**.
5. Click **Next**.

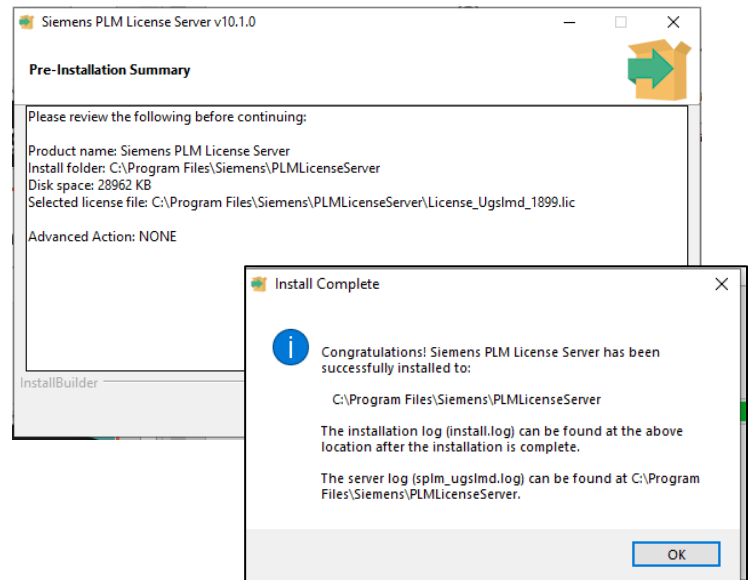


6. Browse and **select** your emergency license file that was provided to you.
7. Click **Next**.



8. Review the summary.
9. Click **Next**. The installation process will begin.
10. After it is complete, click **OK**.

The license server will start automatically and be ready for use. You can check this in Windows Services.

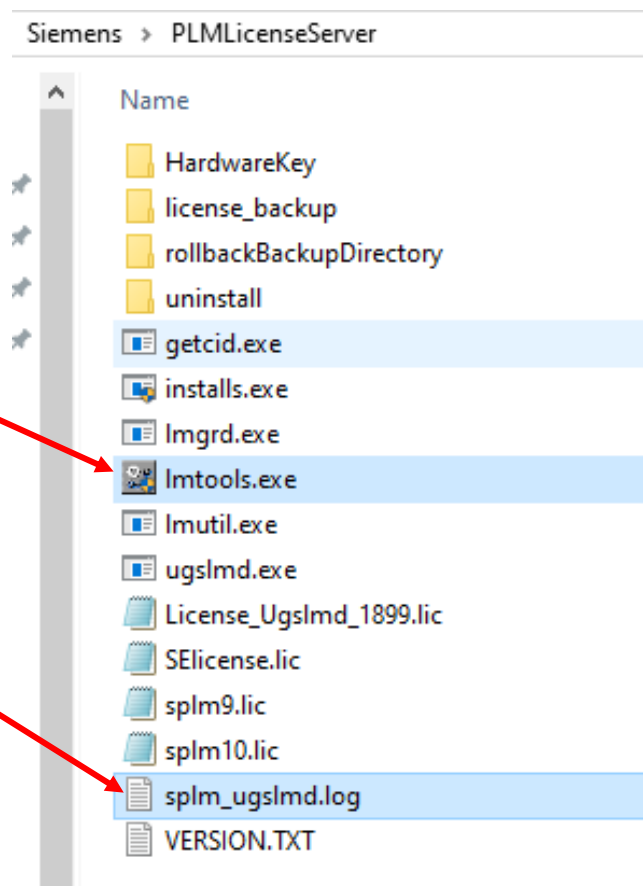


License Installation Complete

The installation folder will contain files that are helpful for maintaining the license server.

Lmtools.exe – the configuration for change license files.

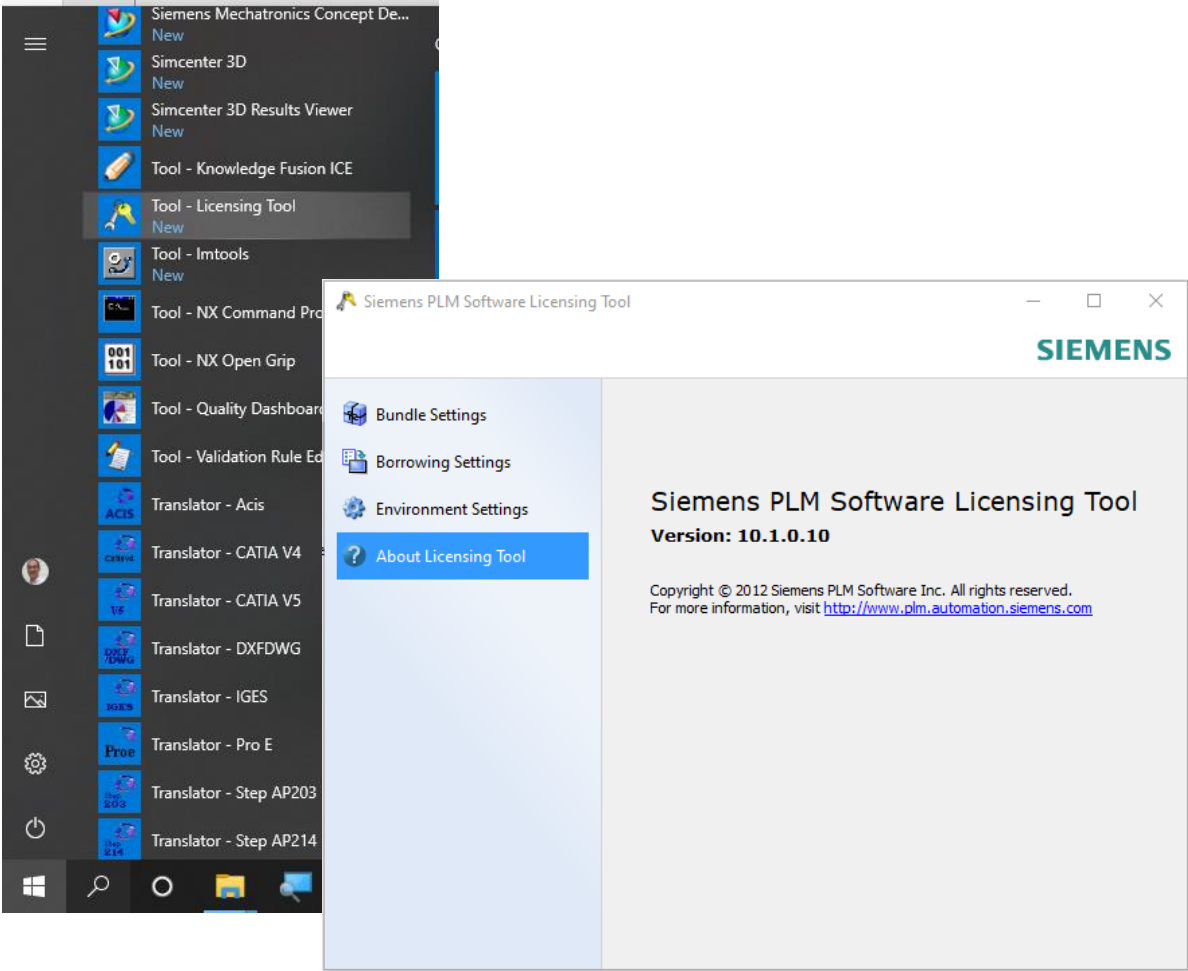
splm_ugslmd.log – the log file that will contain error messages when the license server has a problem.



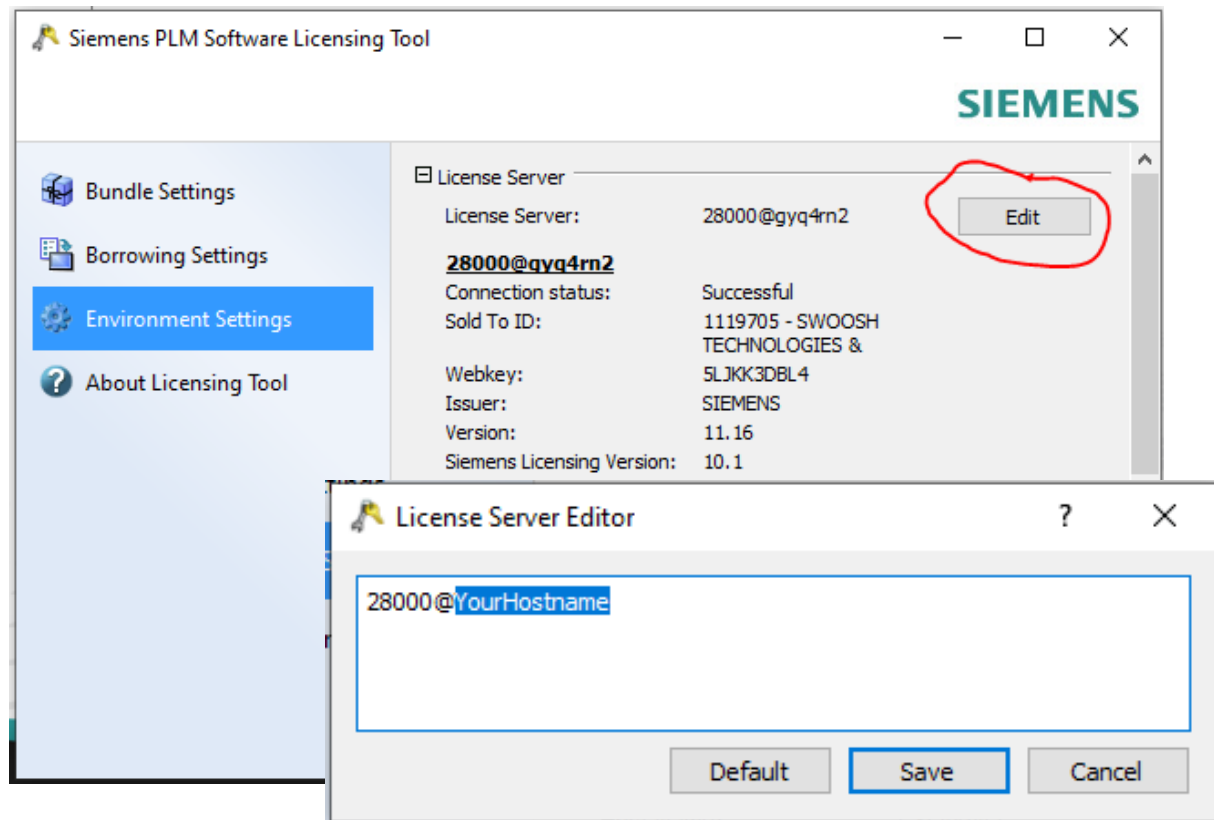
Run Licensing Tool

Your NX software needs to be configured to use the new license.

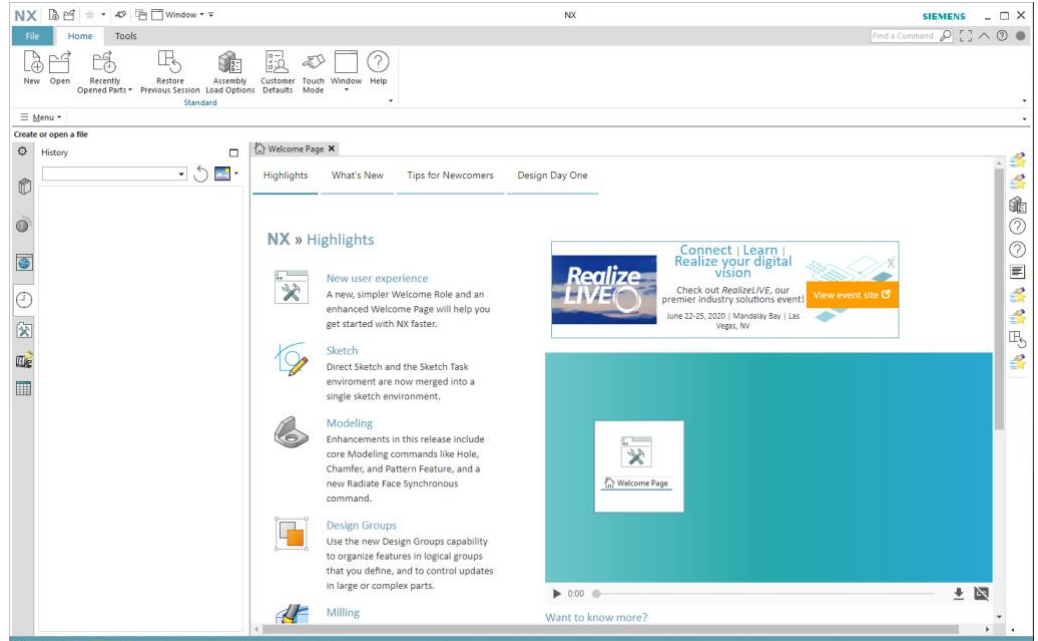
1. In Windows, go to Start Menu → Siemens NX → Tool – Licensing Tool



2. Click the **Environment Settings**.
3. Click the **Edit** button.
4. In the **License Server Editor**, make sure that your computer name is entered after the @ sign.
5. Click **Save**. The Connection status should be "Successful".
6. Close the Licensing Tool.



Run NX.



Any Problems?

If NX is not running after going through the procedure, please don't hesitate to contact our support team for assistance.

By Email

support@swooshtech.com

By Submitting a Support Ticket

[Fill Out the Form](#)

By Phone

(314) 549-8110



Swoosh Technologies & Solutions

1422 Elbridge Payne Rd, Ste 230

St. Louis, MO 63017

www.swooshtech.com

contact-us@swooshtech.com

Swoosh Technologies is an award-winning, certified smart Siemens Digital Industries Software business partner.

Solution
Partner

Digital Industries
Software

SIEMENS